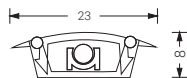
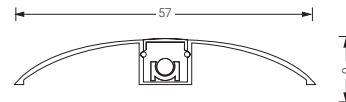




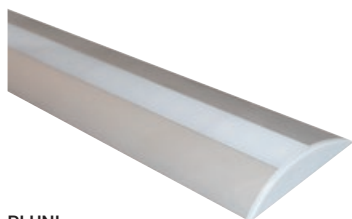
PLEMP



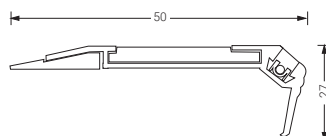
PLEMP



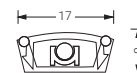
PLUNI



PLUNI



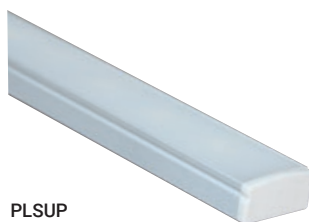
PLESC



PLSUP



PLESC



PLSUP

Light paths

LED path light manufactured in aluminium with multiple uses: corridors, stairs, theatres or malls. Powered at 24v DC, are compatible with the C24-100 and C24-300 central battery systems (up to 400 meters with C24-100 model and up to 1200 meters with C24-300 model).

CE

Four light paths available:

IP
20

		W/m	m (C24-100M)	m (C24-300M)
PLEMP	Recessed	0,25	400	1200
PLUNI	Joint	0,25	400	1200
PLESC	Stair	0,25	400	1200
PLSUP	Surface	0,25	400	1200

Connection specifications with C24 centrals:

- Maximum power per output: 80 W
- Distance between derivations: maximum 20 m.
- Several derivations can be connected to the same output.

and four terminal covers:

PLTEMP	Embedded mounted path light end cap
PLTUNI	Union path light end cap
PLTESC	Stair path light end cap
PLTSUP	Surface mounted path light end cap